

# RANGE ROVER VELAR

## SOPHISTICATED ELEGANCE AND EXQUISITE DETAILS

The New Range Rover Velar is intriguing and desirable by design.



### SEAMLESS INTEGRATION

Single, sophisticated and larger 11.4" floating curved glass touchscreen, seamlessly integrated into the bold, elegant new interior, now incorporating key vehicle functions for fewer reflections and easier control.



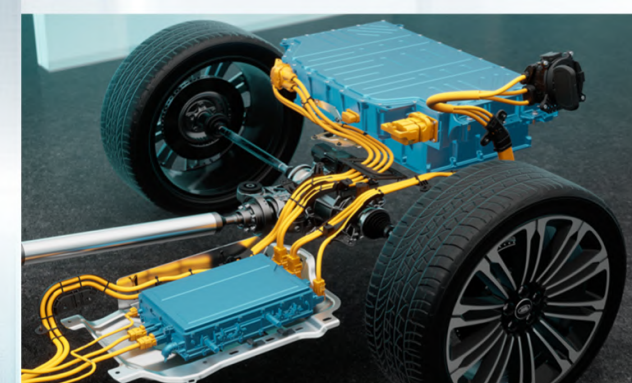
### LEATHER-FREE LUXURY

Kvadrat™ wool blends and a new polyurethane seat textile inspired by bespoke tailoring, combine modern aesthetic with enhanced tactility in leather-free cabin option.



### CLEANER AIR

Cabin Air Purification Plus helps to ensure cleaner interior air via advanced cabin filtration systems with PM2.5 filtration as well as CO2 Management.



### LARGER BATTERY

New, larger 19.2kWh lithium-ion battery offers up to 64km pure electric range (WLTP). Average daily journeys could be driven in a Range Rover Velar with zero tailpipe emissions.

Assumes charging only at home and based on anonymised ownership data from Range Rover Velar customers.



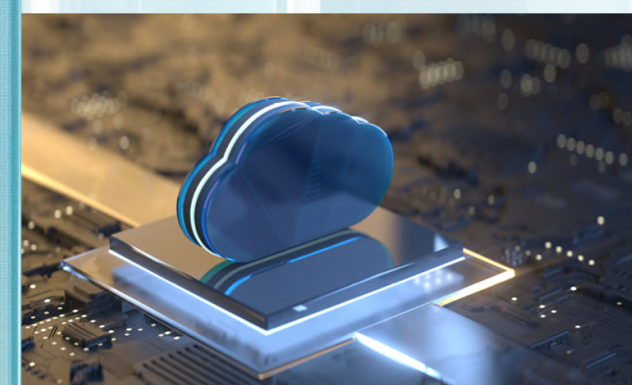
### QUIETEST CABIN

Active Road Noise Cancellation available with flagship Meridian™ sound systems ensures the Range Rover Velar offers the quietest vehicle in its class for road noise.



### POWERFUL DETAILS

Advanced new Pixel LED headlights with intelligent Dynamic Bend Lighting technology offer better visibility and reduced dazzle.



### WIRELESS UPDATES

Software Over The Air updates now span 80 per cent of ECUs, covering Pivi Pro, navigation, on-board diagnostics, chassis and powertrain - with no need to visit a retailer.



### CURATED OPULENCE

New Range Rover Velar Autobiography amplifies Range Rover DNA, with curated specification, including Satin Burnished Copper detailing.



**RANGE ROVER**  
**VELAR**

## CALM SANCTUARY

A mix of tactile, authentic materials, fine craftsmanship, elegant and modern design, and intuitive, discreet technology creates a feeling of calm sanctuary and enables a beautifully reductionist interior.

### PURE & CLEAN



Cabin Air Purification Plus helps promote occupant wellbeing and alertness, with CO<sub>2</sub> Management and PM2.5 Cabin Air Filtration. A Purify function reduces harmful allergens or particulates inside, with nanoe™ X technology to combat pathogens.

### PERSONAL CONCIERGE



Voice control in 24 languages, plus the full power of Amazon Alexa, to bring a new level of convenience.

### ELEGANT & CONVENIENT



11.4-inch, 'floating' curved glass touchscreen is 62% larger. Award-winning Pivi Pro provides access to 80% of features within two taps.

### CALM & QUIET



Pioneering Active Road Noise Cancellation technology minimises road noise. It reduces overall interior noise levels by a minimum of 4dB, ensuring the New Range Rover Velar offers the quietest vehicle in its class for road noise.

\*When measured against direct competitors (Audi Q5, BMW X4, Mercedes GLC and Porsche Macan).

### EFFORTLESS CONNECTIVITY



Wireless connectivity and Wireless Device Charging eliminate the need for cables and help prevent smartphones from being a distraction.

### GUARANTEED COMFORT



20-way heated and cooled massage seats are finished in the finest materials, including a soft wool from Danish textile experts Kvadrat™, which is 58% lighter than leather.



## CONFIDENT VISIBILITY

New Range Rover Velar pushes the boundaries of Pixel LED lighting technology, to enhance your confidence when driving.



4

### INTELLIGENT BEAM

Adaptive Driving Beam is able to cast shadows around four oncoming objects avoiding dazzle.



### ADAPTIVE

Adaptive Driving Beam automatically adapts to vehicle speed, casting a wide beam at low speeds and a more intense, longer beam above 70km/h.

### PRECISE CONTROL

67

Each headlight features four pixel modules with 67 precisely controlled LEDs in each one, to accurately adapt to the conditions and the road ahead and provide the most effective forward beam.



500

### EXTENDED VISIBILITY

Dynamic Bend Lighting uses speed and steering data to respond to the road and illuminate dark corners and verges, while the high beam range can focus light almost half a kilometre in front, for optimum visibility.



**RANGE ROVER**  
**VELAR**

## ELECTRIC PROPULSION

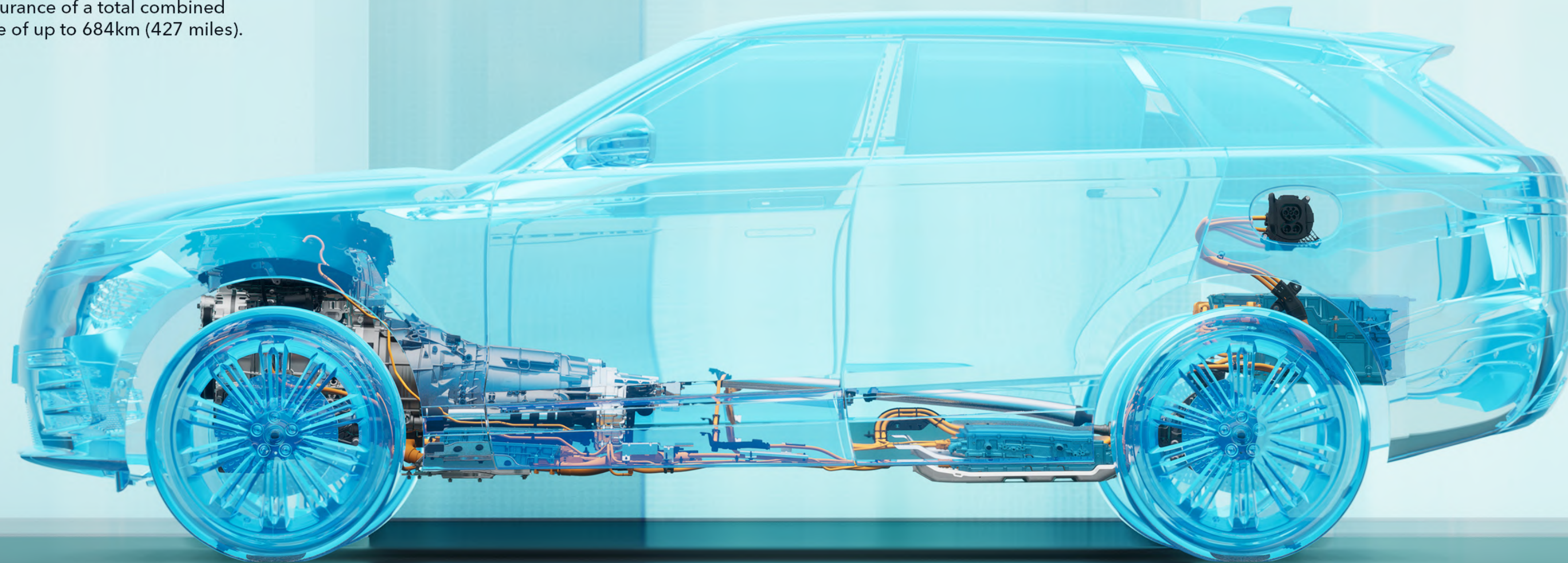
The New Range Rover Velar P400e Plug-In Electric Hybrid is a sophisticated, seamless luxury experience, with greater electric range, intelligent control and DC rapid charging.

### EVERYDAY ELECTRIC



The new Range Rover Velar P400e Electric Hybrid has a 21% greater pure electric driving range, up to 64km (40 miles), reducing CO2 emissions to 38g/km.

This makes a refined electric vehicle for most daily journeys, with the reassurance of a total combined real-world driving range of up to 684km (427 miles).



#### EVERYDAY ELECTRIC

Up To

**64 km**

Pure Electric Driving Range

Up To

**684 km**

Combined Real World Range

#### LARGER CAPACITY

**19.2 kWh**

New Larger Lithium-ion Battery

#### RAPID CHARGING

**30 minutes**

0-80% charge using a 50kW+ rapid DC charge

#### SMOOTH & REFINED

**105 kW**

Electric Motor

#### EFFORTLESS PERFORMANCE

**404 ps**

0-100km/h in 5.4 seconds  
0-60mph in 5.1 seconds

The figures provided are as a result of official manufacturer's test in accordance with EU WLTP legislation derivatives with a fully charged battery. For comparison purposes only. Real world figures may differ. CO2, fuel economy, energy consumption and range figures may vary according to factors such as driving styles, environmental conditions, load, wheel fitment, accessories fitted, actual route and battery condition. Range figures are based upon production vehicle over a standardised route. Assumes charging only at home and based on anonymised ownership data from Range Rover Velar customer.